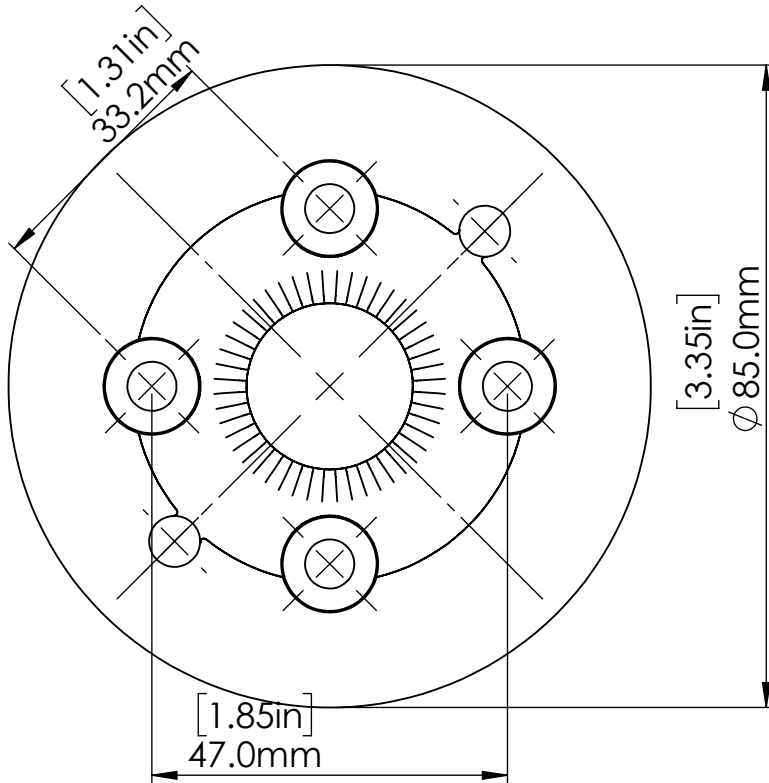




HEXX BASE PLATE TEMPLATE

Note - Reference only. Template may not be printed to scale. Measure and check to confirm hole spacing accuracy.



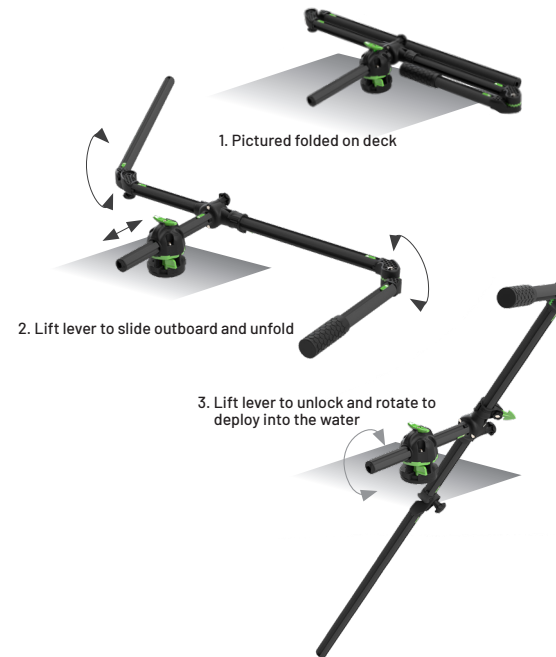
HEXX

LIVE POLE 60 11-4190-11

LIVE SONAR TRANSDUCER MOUNT ASSEMBLY & INSTALLATION GUIDE

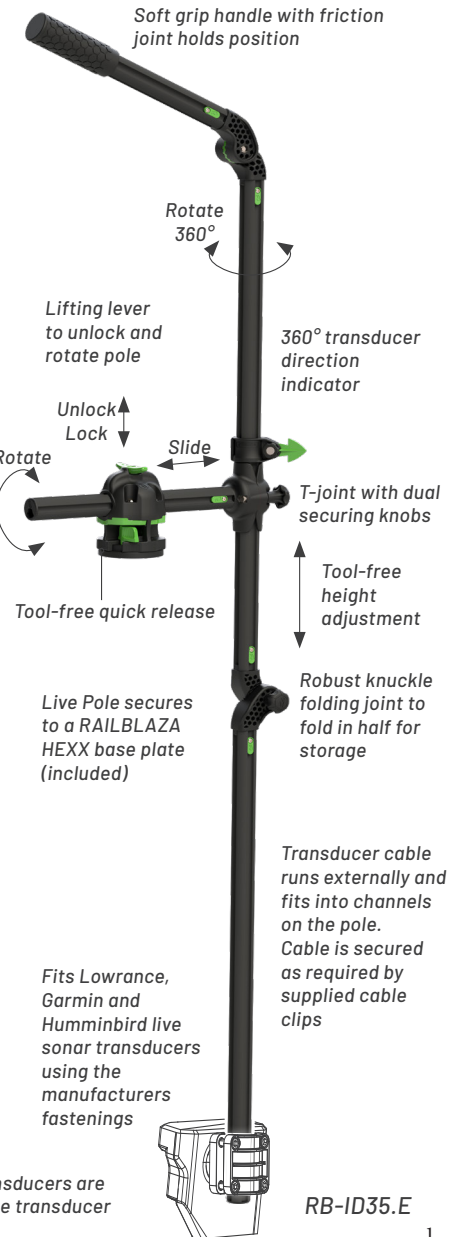
Congratulations for choosing HEXX Live Pole, designed and manufactured by RAILBLAZA to mount and aim Lowrance, Garmin, and Humminbird live transducers to view more action below the water in real-time.

HEXX LIVE POLE DEPLOYMENT



Note - Boat speed must not exceed 5 knots when HEXX Live Pole is deployed into the water.

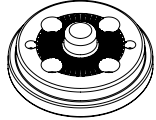
Note - Transducer manufacturers recommend live sonar transducers are switched to OFF when not submerged in water. Damage to the transducer may result from dry running.



HEXX LIVE SONAR TRANSDUCER MOUNT

HEXX Base Plate Installation

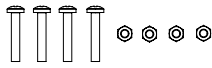
Please read 'HEXX Live Pole Base Installation' prior to proceeding.



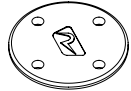
HEXX Base Plate



2 x 1/4-20 nyloc nuts



4 x philips machine screws
4 x nyloc nuts



HEXX backing Plate

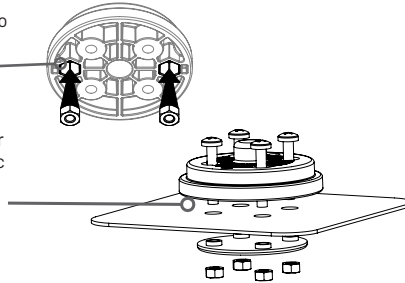
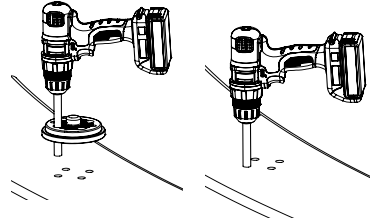
Refer to the HEXX Base Plate template on pg.4 to confirm hole positions.

1. Drill four 1/4" (6mm) pilot holes on the gunnel in a diamond shape.

2. Drill the pilot holes to 3/8" (10mm).

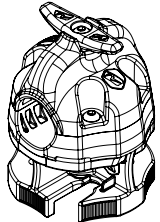
3. Push two 1/4-20 nyloc nuts into the hex recess of the Base Plate. Plastic ring facing out.

4. Attach the base plate with four philips machine screws and nyloc nuts. Backing plate R logo faces down.



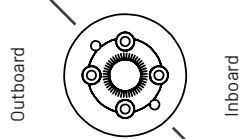
HEXX Live Pole Base Installation

IMPORTANT - Note the position of the two Live Pole Base mounting holes within the Live Pole Base Plate prior to installing via fixed mount (Option A) or quick release mount (Option B).

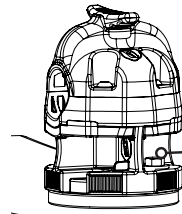


HEXX Live Pole Base

Option A - Fixed Mount (Recommended for best results)

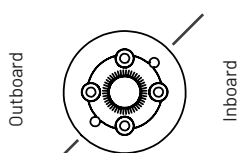


Top View - Note position of Live Pole Base mounting holes

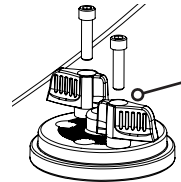


Attach using supplied hex head bolt and washer

Option B - Quick Release Mount

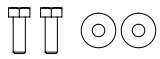


Top View - Note position of Live Pole Base mounting holes

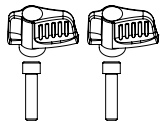


Secure Live Pole Base by turning locking tabs

Attach green quick release tabs with cap screws. Tighten only enough for the tabs to move with some resistance.

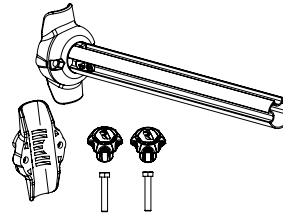


Fixed mount option A:
2 x hex head bolts
2 x washers



Quick release option B:
2 x green quick release tabs
2 x cap screws

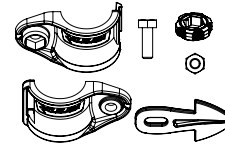
HEXX Live Pole Assembly



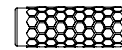
1x T-Joint half
1x T-Joint fastened to horizontal tube
2x Long hex bolts
2x T-joint knobs



4 x C shape transducer cable clips
4 x Adhesive transducer cable clips



2x locking collar halves
1x Hex bolt
1x Nut and thumb wheel
1x Green direction indicator



1x Soft grip handle
2x Tube end caps

1. Attach the T-joint to the vertical tube using 2 x long hex bolts and 2 x T-joint black knobs. Position the T-joint above the folding joint with the groove of the horizontal tube on top. Insert 1 x tube end cap into the open end. (see Note below if cutting tube to desired length)

2. Attach a live sonar transducer to the bottom of the HEXX Live Pole using the transducer manufacturers fastenings. Insert 1 x tube end cap into the bottom of the tube end. Use the C-shape transducer cable clips to manage cable along the tube. Use adhesive transducer cable clips to manage cable along the deck. **Allow 24 hours for adhesive to cure before use.**

3. Raise green lifting lifter of the HEXX Live Pole Base and slide the assembled tube into the mounted Live Pole base.

4. Assemble the locking collar and transducer direction indicator.

5. Attach transducer direction indicator at the desired height. The green direction indicator is designed to face in the direction of the live transducer field. Note - The direction indicator may be loosened and slid outwards and upwards for storage.

6. Attach soft grip handle.

Note - If the grip handle tube, or the horizontal tubes, are too long, cut to length, then add the soft grip handle and tube end caps.

